


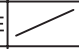


ECO. NO	REV	MARK	DETAILS	DESIGN	DATE
	1		首次发行	易晓庆	2022-1-13
	2		删除Low Battery Flash once every 30 seconds	易晓庆	2022-1-17

 <p>DIMENSION TOLERANCES UNLESS OTHERWISE SPECIFIED</p> <p>>0.0AND≤10 ±0.05mm</p> <p>>10AND≤50 ±0.10mm</p> <p>>50AND≤100 ±0.15mm</p> <p>>100AND≤150 ±0.200mm</p> <p>>150 ±0.250mm</p> <p>Angular ±0.25°</p>	 <p>青嵘科技有限公司 A&R Technologies LTD.</p>								
	CLIENT				PART NAME		英文说明书		
	MOULD NO				GB-706W(wireless ready)		PART NO		0-ML00-3147-01-1
	MATERIAL		REV	2	DESIGN	易晓庆	DATE	2022-1-17	
	SIZE		SCALE		CHECK		DATE		
	SHEET		UNIT	mm	APPROVAL		DATE		

Product Description

GB-706W is a robust Wireless Glass Break Detector which has alarm, tamper and low battery signal outputs.

Setup Instructions

Test Mode:

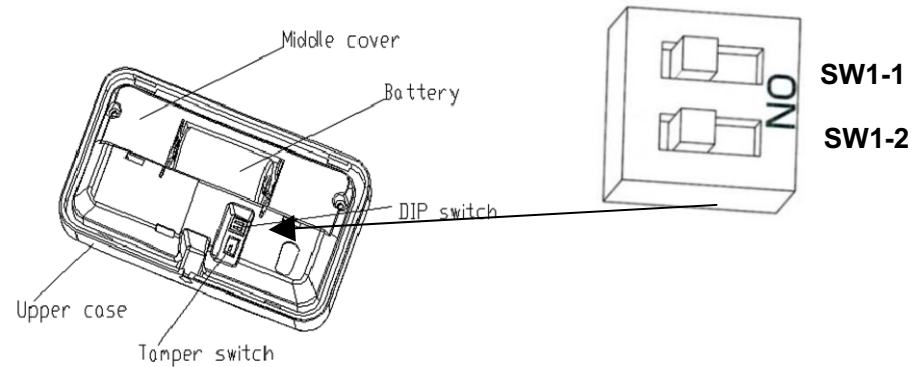
Remove the insulation tabs from the battery holder, test mode is activated for 5 Minutes upon power on. LED blinks every second when detector is in test mode. Detector will exit test mode after 5 minutes.

Sensitivity (Range):

Table 1 below for detail sensitivity setting.

SENSITIVITY	DETECTION RANGE	SW1-1	SW1-2
MAX	6 M	OFF	OFF
MEDIUM	4M	OFF	ON
LOW	2.5M	ON	OFF
LOWEST	1.5M	ON	ON

(Table 1)



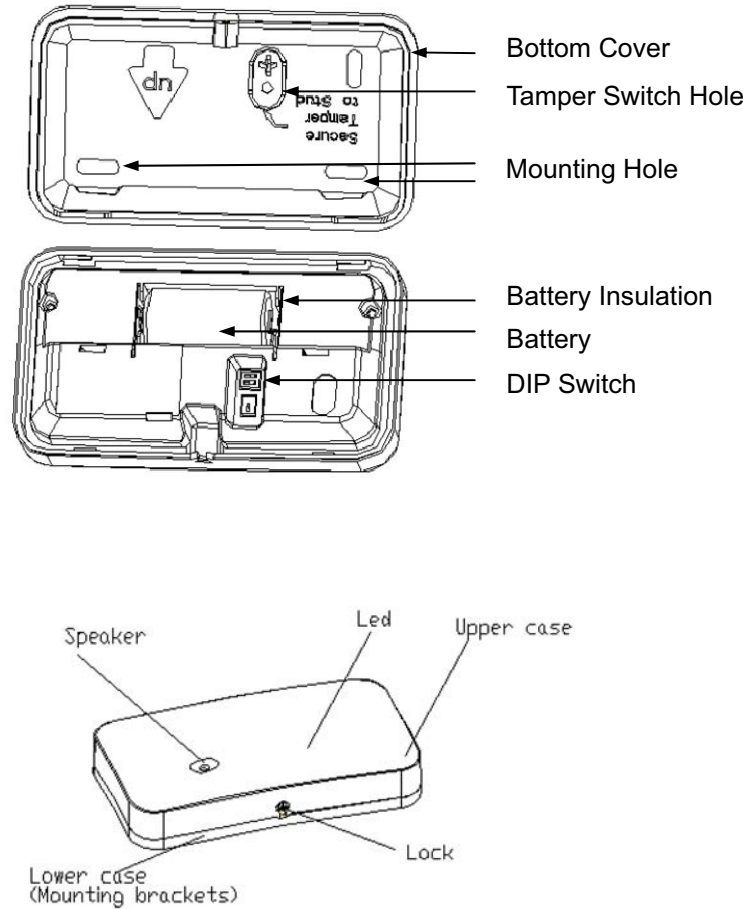
LED Indicators:

Table 2 below summarizes the LED messages.

CONDITION	RED LED
Power Up	Flash 3 times, flash once per second
Test Mode, event detected	Flash once per second (slow flashing)
Test Mode, alarm	Flash 2 seconds (quick flashing)
Working, Alarm	ON 5 seconds

(Table 2)

Glass Break Detector Internal Parts



Mounting Height

It is recommended that the unit be mounted at a height not less than 2 meters. (See fig. 1-6.)

When the unit is installed in vicinity with active ultrasonic sensors, the distance between units must be at least 1 meter.

All areas of glass to be monitored shall be within a clear line of sight of the unit. Distance from the unit to the most remote point of monitored glass shall not exceed 6 meters.

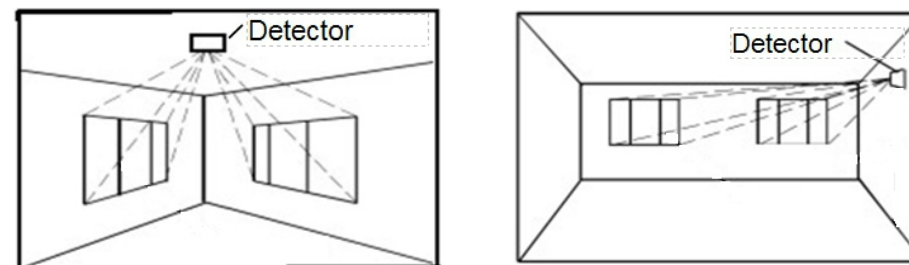


Fig.1 Ceiling mount for windows on adjacent walls

Fig.2 Wall mount for windows on same wall

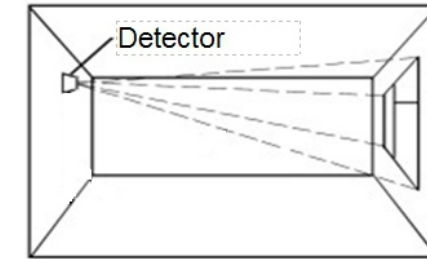


Fig.3 Wall mount for windows on opposite wall

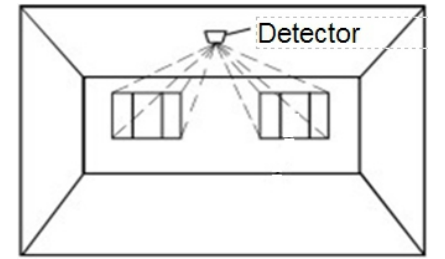


Fig.4 Ceiling mount for windows on same wall



Fig.5 Detector mount between window and curtains (louvers)

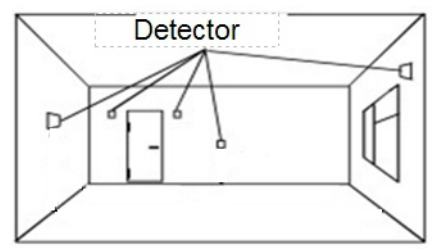


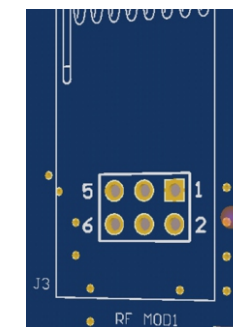
Fig.6 Places not recommended for mounting of the detector

Specifications

- Power: 3V Battery (CR-123A)
- Detection Range: Maximum range is 6m.
- RF Frequency: by customer
- Operating Temperature: -10°C ~ 50°C
- Dimensions: 106 x 60 x 25.5mm

J3 Connector:

- Pin1: GND
- Pin2: Alarm output
Standby: low-level output, Active: High-level output for 5 seconds.
- Pin3: Stays High when supply voltage is 2.4V or above, change to low 10 minutes after supply voltage is below 2.4V.
- Pin4: 3V output when tamper is activated. 0V output when tamper is not activated.
- Pin5: Input 3VDC
- Pin6: NC



- Pin1: GND
- Pin2: Alarm
- Pin3: Low Battery
- Pin4: Tamper
- Pin5: 3VDC
- Pin6: NC